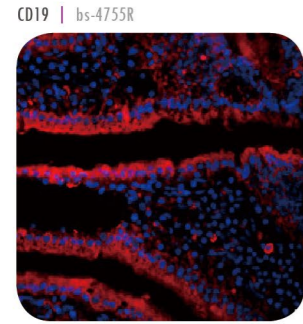


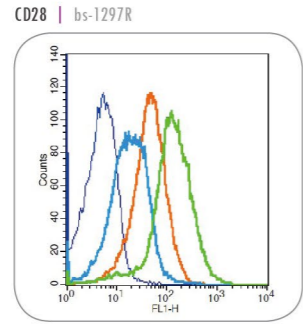
CD MARKERS



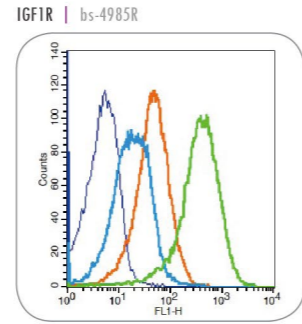
CD MARKERS



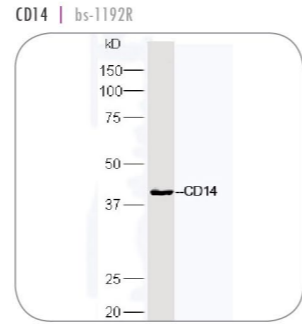
IF(IHC-P) | Mouse intestine



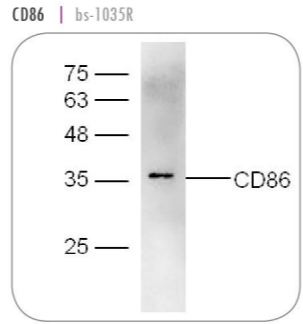
FCM | Mouse splenocytes



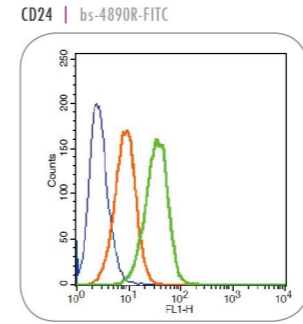
FCM | Mouse splenocytes



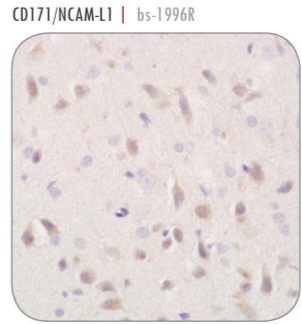
WB | Mouse lung lysates



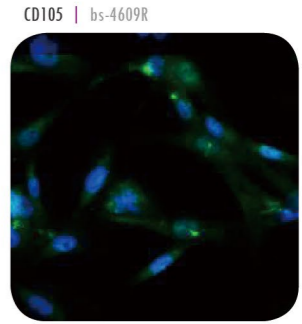
WB | HeLa cell lysates



FCM | A549 cells



IHC-P | Rat brain



IF (ICC) | U138 cells

TARGET	APPLICATION	SPECIES	CATALOG
BMPRI1A	WB, IHC-P, FCM	Hu, Ms, Rt	bs-1509R
CCRS/CD195	IHC-P, IF(IHC-P), FCM	Hu, Ms	bs-2514R
CCR7/CD197	IHC-P, IF(IHC-P), FCM	Hu, Ms, Rt	bs-1305R
CD10	IHC-P, IF(IHC-P), FCM	Hu, Ms, Rt	bs-0527R
CD101	WB, IHC-P	Hu, Ms	bs-10727R
CD105	WB, IHC-P, ICC, FCM	Hu, Ms, Rt	bs-4609R
CD111/Nectin1	WB	Hu, Ms, Rt	bs-11126R
CD11b, CD11c	IHC-P, FCM	Hu, Ms, Rt	bs-1014R
CD11b/c	IHC-P, IF(IHC-P)	Hu, Ms, Rt	bs-2508R
CD137	IHC-P, ICC	Hu, Ms, Rt	bs-2449R
CD138/Syndecan1	WB, IHC-P	Hu, Ms, Rt	bs-1309R
CD14	WB, IHC-P	Hu, Ms, Rt	bs-1192R
CD142	WB, IHC-P, FCM	Hu, Ms, Rt	bs-4690R
CD146/MCAM	IHC-P	Hu, Ms, Rt	bs-1618R
CD147	WB, IHC-P	Hu, Ms, Rt	bs-0684R
CD15/Fut4/SSEA-1	IHC-P, ICC, FCM	Hu, Ms, Rt, Bv	bs-1702R
CD151	WB, IHC-P, FCM	Hu, Ms, Rt	bs-2524R
CD153	WB	Ms, Rt	bs-4778R
CD158i	IHC-P	Hu	bs-2644R
CD160/By55	WB, IHC-P	Hu, Ms, Rt	bs-2526R
CD161	WB, IHC-P	Hu, Ms, Rt	bs-2807R
CD163/M130	IHC-P, IF(IHC-P), ICC	Hu, Ms, Rt, Pg	bs-2527R
CD163L1	IHC-P	Hu	bs-7993R
CD166	WB, IHC-P, FCM	Hu, Ms, Rt	bs-1251R
CD168	WB, IHC-P	Hu, Ms, Rt	bs-3845R
CD16a, CD16b	IHC-P, IF(IHC-P), FCM	Hu, Ms, Rt	bs-6028R
CD177/NB1	IHC-P	Hu, Ms, Rt	bs-1482R
CD19	IHC-P, IF(IHC-P)	Hu, Ms, Rt	bs-0079R
CD1d1	WB, IHC-P	Ms, Rt	bs-3690R
CD20	IHC-P, FCM	Hu, Ms, Rt	bs-0080R
CD200R2	WB, FCM	Hu	bs-7351R
CD209	WB, IHC-P	Ms, Rt	bs-2239R
CD21/EBVreceptor	IHC-P, FCM	Hu, Ms, Rt	bs-3792R
CD22/BLCAM	IHC-P	Hu, Ms, Rt	bs-1481R

TARGET	APPLICATION	SPECIES	CATALOG
CD24	WB, IHC-P, FCM	Hu	bs-4890R
CD244	FCM	Hu, Ms, Rt	bs-2470R
CD244(Tyr271)	WB	Hu	bs-5284R
CD26	IHC-P, ICC	Hu, Ms, Rt, Gt	bs-2570R
CD265	WB, IHC-P, IF(IHC-P)	Hu, Ms, Rt	bs-2695R
CD276/B7H3	IHC-P, FCM	Hu, Ms, Rt	bs-11019R
CD28	IHC-P, IHC-F, IF(IHC), FCM	Hu, Ms, Rt	bs-1297R
CD30	WB, IHC-P	Hu	bs-2495R
CD31	WB, IHC-P, ICC, FCM	Hu, Ms, Rt	bs-0195R
CD31	WB, IHC-P, IF(IHC-P), ICC, FCM	Hu, Ms, Rt, Dg	bs-0468R
CD32	WB, IHC-P	Hu	bs-2573R
CD32B(Tyr292)	IHC-P, FCM	Hu, Ms, Rt	bs-6031R
CD33	IHC-P, IF(IHC-P), FCM	Hu, Ms, Rt	bs-1514R
CD34	WB, IHC-P, IF(IHC-P), ICC, FCM	Hu, Ms, Rt, Rb	bs-0646R
CD34	IHC-P, IF(IHC-P), ICC, FCM	Hu, Ms, Rt	bs-2038R
CD36	WB, IHC-P, FCM	Ms, Rt	bs-1100R
CD36	WB, IHC-P	Hu, Ms, Rt	bs-8873R
CD3E	WB	Mu, Rt	bs-4815R
CD4	IHC-P, IF(IHC-P)	Ms, Rt	bs-0766R
CD4	WB, IHC-P, IF(IHC-P), FCM	Hu, Ms, Rt, Pg	bs-0647R
CD40L/CD154	FCM	Hu, Ms, Rt	bs-1286R
CD44	WB, IHC-P	Hu, Ms, Rt, Ch	bs-2507R
CD45	WB, IHC-P, FCM	Hu, Rt	bs-4819R
CD45	FCM	Mu	bs-4818R
CD46/MCP	WB, IHC-P	Hu, Ms	bs-1529R
CD47/MER6	WB, IHC-P	Hu, Ms, Rt	bs-2386R
CD56	WB, IHC-P	Hu, Ms, Rt	bs-0736R
CD6/TP120	FCM	Hu, Mu, Rt	bs-2488R
CD62L	WB, IHC-P, IF(IHC-P), FCM	Ms, Rt	bs-1036R
CD62p	WB, IHC-P, FCM	Hu, Rt, Ms, Pg	bs-0561R
CD64/IGFR1	WB, IHC-P	Hu, Ms, Rt	bs-3511R
CD68	WB, IHC-P, IHC-F, IF(IHC-P)	Ms, Rt	bs-0649R
CD68	IHC-P	Hu	bs-1432R
CD69/CLEC2C/AIM	WB, IHC-P	Hu, Ms, Rt	bs-2499R

TARGET	APPLICATION	SPECIES	CATALOG
CD73	ICC, FCM	Hu, Ms, Rt, Ch, Dg	bs-4834R
CD75	WB, IHC-P	Hu, Ms, Rt	bs-3793R
CD8	WB, IHC-P, IF(IHC-P), FCM	Hu, Ms, Rt	bs-0648R
CD80	IHC-P	Hu, Ms, Rt	bs-2211R
CD83	FCM	Hu, Mu, Rt	bs-4826R
CD84/SLAMF5	WB, IHC-P	Hu, Ms, Rt	bs-2520R
CD86	WB, IHC-P, FCM	Hu, Ms, Rt	bs-1035R
CD8alpha	IHC-P, IF(IHC-P)	Rt	bs-4791R
CD95	WB, IHC-P	Ms, Rt	bs-0215R
CD97	IHC-P, FCM	Hu, Ms, Rt	bs-2522R
CD98	WB, IHC-P	Hu, Ms, Rt	bs-6659R
CD171/NCAM-L1	IHC-P	Hu, Ms, Rt	bs-1996R
c-Kit	IHC-P, FCM	Hu, Ms, Rt, Dg	bs-0672R
c-Kit	WB, IHC-P, ICC	Hu, Ms, Rt	bs-10005R
CXCR1	WB, IHC-P	Hu, Ms, Rt	bs-1009R
CXCR2/CD182	IHC-P, ICC	Hu, Ms, Rt	bs-1629R
CXCR3	IHC-P, ICC, FCM	Ms, Rt	bs-2209R
CXCR4	WB, IHC-P, FCM	Hu, Ms, Rt	bs-1011R
EpCAM	WB, IHC-P, IF(IHC-P)	Hu, Ms, Rt	bs-0593R
EpCAM/CD326	WB, IHC-P, IF(IHC-P), ELISA	Hu, Ms, Rt	bs-1513R
Fas Ligand	WB, IHC-P	Hu, Ms, Rt	bs-0216R
FGFR2	FCM	Hu, Ms, Rt	bs-0675R
Frizzled 10/CD350	WB, IHC-P, FCM	Hu, Ms, Rt	bs-13216R
ICAM1	WB, IHC-P, IF(IHC-P)	Hu, Ms, Rt	bs-0608R
IGF1R	WB, IHC-P, FCM	Hu, Ms, Rt	bs-0227R
IGF1R (Tyr980)	WB, IHC-P	Hu, Ms, Rt	bs-5447R
IGF2R	WB, IHC-P	Hu, Ms, Rt	bs-6670R
IL1 Receptor 1	WB, IHC-P	Hu, Ms, Rt	bs-2594R
IL-12RB1/CD212	IHC-P, IHC-F	Hu, Ms	bs-2603R
IL-21R	IHC-P	Hu, Ms, Rt	bs-2622R
IL-7Ra/CD127	WB	Hu, Ms	bs-1540R
Integrin alpha 2b/CD41	IHC-P, IF(IHC-P), ICC	Hu, Ms, Rt	bs-2636R
Integrin alpha 3	WB, IHC-P	Hu, Ms, Rt	bs-2093R
Integrin Alpha 3 + Beta 1	IHC-P, ICC	Hu, Ms, Rt	bs-1057R

TARGET	APPLICATION	SPECIES	CATALOG
Integrin alpha 4/CD49d	IHC-P, FCM	Hu, Ms, Rt	bs-0641R
Integrin alpha 4+Beta 7	IHC-P	Hu, Ms, Rt	bs-2055R
Integrin alpha 5	WB	Hu	bs-0567R
Integrin Alpha 5 + Beta 3	IHC-P, IHC-F, FCM	Hu, Ms, Rt	bs-1310R
Integrin Alpha V + Beta 5	IHC-P, FCM	Hu, Ms, Rt	bs-1356R
Integrin alpha V/CD51	IHC-P, FCM	Hu, Ms, Rt	bs-2250R
Integrin beta 1	WB, IHC-P, ICC	Hu, Ms, Rt	bs-0486R
Integrin beta 3	WB, IHC-P, ICC	Hu, Ms, Rt	bs-0342R
Leptin receptor	WB	Hu, Ms, Rt	bs-0961R
Leptin receptor (Isoform B)	IHC-P, FCM	Hu, Ms, Rt	bs-0109R
MRC1	IHC-P, FCM	Hu, Ms, Rt	bs-4727R
MRC2	FCM	Hu, Ms, Rt	bs-6412R
Mucin 1	WB, IHC-P	Hu, Ms, Rt	bs-1239R
NGG2D	IHC-P, IF(IHC-P)	Hu, Ms, Rt	bs-0938R
PD-1/CD279	WB, IHC-P	Hu, Ms, Rt	bs-1867R
NCR1	IHC-P, IF(IHC-P), FCM	Hu, Ms, Rt	bs-10027R
SLC7A5	WB, IHC-P	Hu, Ms, Rt	bs-10125R
Thy-1	IHC-P, FCM	Hu, Ms, Rt, Sh	bs-0778R
TLR1	IHC-P, FCM	Hu, Ms, Rt	bs-1919R
TLR2	WB, IHC-P, FCM	Hu, Rt, Bv	bs-1019R
TLR3	WB, IHC-P	Ms, Rt	bs-1444R
TLR6	IHC-P, FCM	Hu, Ms, Rt	bs-2716R
TNF Receptor 1	WB, IHC-P	Hu, Ms, Rt	bs-2941R
TNFRSF13B	WB, FCM	Ms, Rt	bs-2773R
TNFSF14	WB, IHC-P	Hu, Ms, Rt	bs-2462R
TRAIL	WB, IHC-P	Hu, Ms, Rt	bs-1214R
Transferrin receptor	WB, IHC-P	Hu, Ms, Rt	bs-0988R
VEGFR2	WB, IHC-P, FCM	Hu, Ms, Rt, Pg	bs-10412R